

# SONORA PRE – K

## MONDAY

## TUESDAY

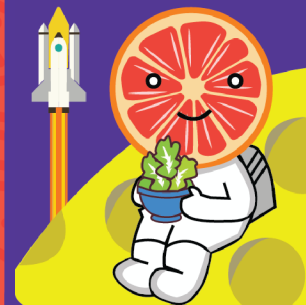
## WEDNESDAY

## THURSDAY

## FRIDAY

**FEB**  
**MENU 2024**

**JOHNSON  
SPACE  
CENTER**



## ANNOUNCEMENTS

5 BRONCO McRib SAND  
TOTS  
FRUIT CUP  
WHITE MILK

6 CHEESE ENCHILADAS  
REFRIED BEANS  
ORANGES  
WHITE MILK

7 CHICKEN NUGGETS  
MAC & CHEESE  
ZUCCHINI  
SLICED GRAPES  
WHITE MILK

8 C.F.S. SANDWICH  
FRENCH FRIES  
APPLE SAUCE CUP  
WHITE MILK

9  
**NO  
SCHOOL**

12 BBQ SANDWICH  
BAKED BEANS  
PINEAPPLE  
WHITE MILK

13 TURKEY POT PIE  
BISCUIT  
GARDEN SALAD  
FRESH FRUIT  
WHITE MILK

14 CHEESY BREADSTICK  
MARINARA SAUCE  
STEAMED BROCCOLI  
CINNAMON APPLES  
VALENTINES CAKE  
WHITE MILK

15 CHICKEN WINGS  
COOKED CARROTS  
MIXED FRUIT  
WHITE MILK

16 FISH NUGGETS  
ROLL  
FRENCH FRIES  
GREEN BEANS  
PEACHES  
WHITE MILK

19 CHICKEN SANDWICH  
HAMBURGER GARNISH  
FRUIT CUP  
WHITE MILK

20 ROASTED CHICKEN  
ROLL  
MASHED POTATOES  
FRUITY GELATIN  
WHITE MILK

21 NACHOS GRANDE  
REFRIED BEANS  
APRICOTS  
WHITE MILK

22 ASIAN MEATBALL / RICE  
EGG ROLL  
STEAMED BROCCOLI  
MANDARIN ORANGES  
WHITE MILK

23 **NOON RELEASE**  
GRILLED CHEESE SAND  
TOTS  
FRUIT  
WHITE MILK

26 HOT DOG  
(CHILI & CHEESE ON SIDE)  
TOTS  
PEARS  
WHITE MILK

27 CHICKEN FAJITAS  
PINTO BEANS  
STRAWBERRIES  
WHITE MILK

28 CHICKEN ALFREDO  
BREADSTICK  
CALIFORNIA BLEND  
PEACHES  
WHITE MILK

29 POPCORN CHICKEN  
CORN  
APPLE SLICE  
WHITE MILK



Food and Nutrition Division  
National School Lunch Program



TEXAS DEPARTMENT OF AGRICULTURE  
**COMMISSIONER SID MILLER**

This product was funded by USDA.  
This institution is an equal opportunity provider.



Updated 2/1/2024  
[www.SquareMeals.org](http://www.SquareMeals.org)